



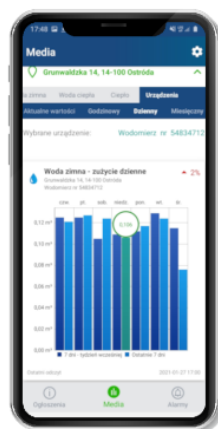
GlobeOMS[®]

NetLand smart meter solutions

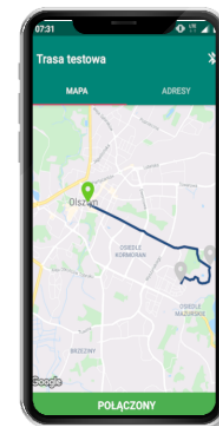
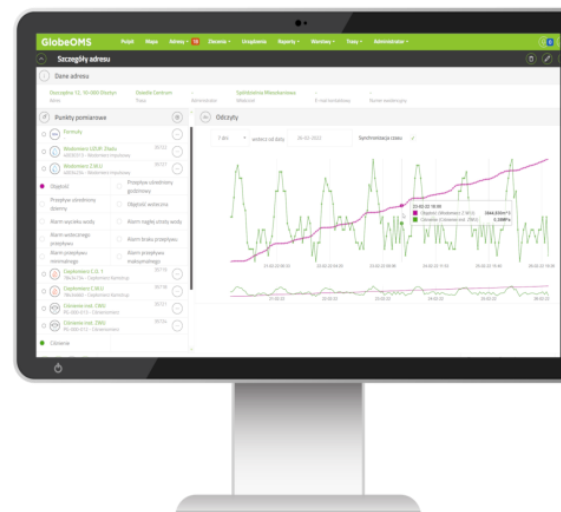
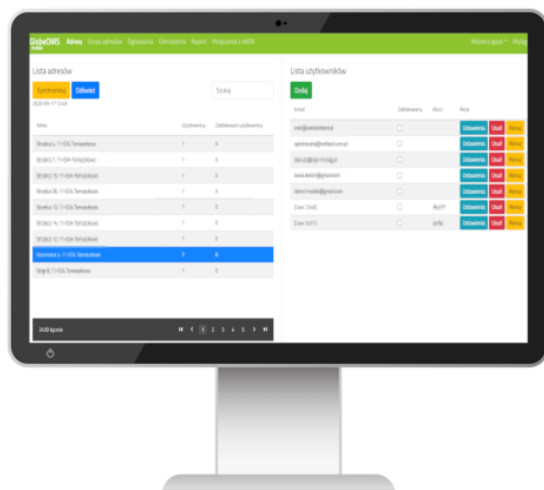


LITE & PRO

ROUTIFY

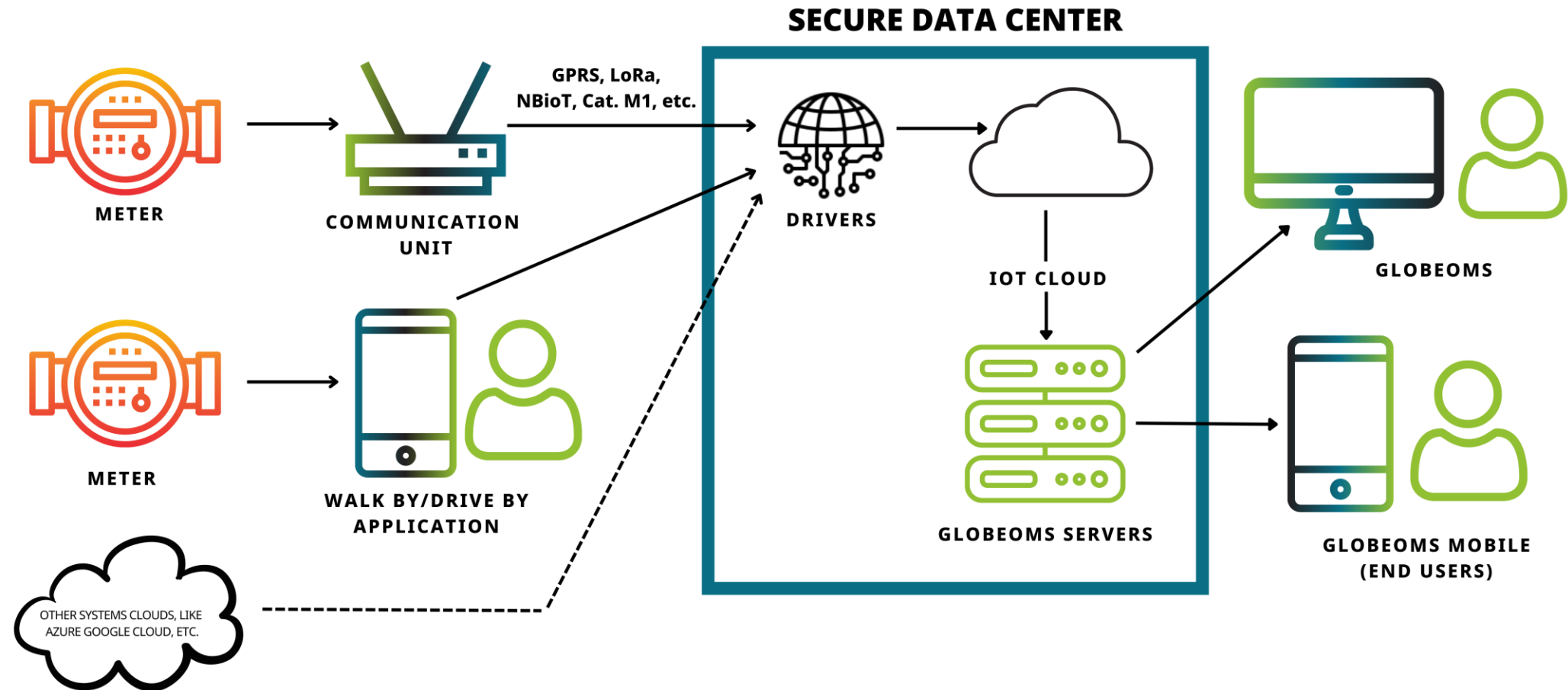


Android/iOS

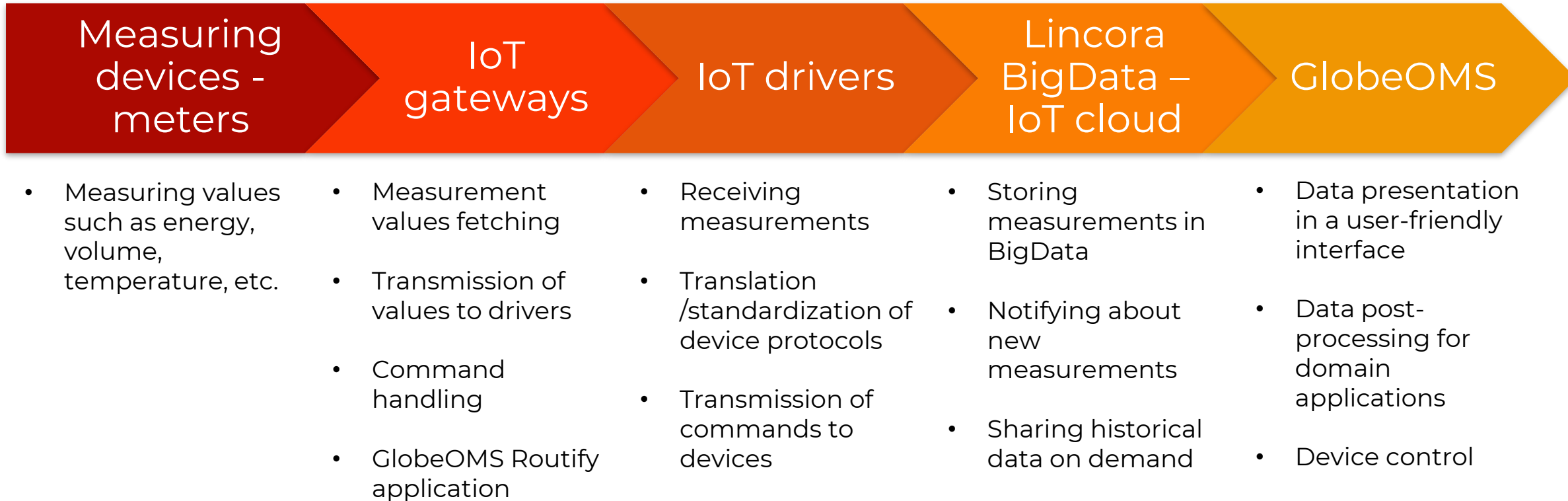


Android

Simplified architecture

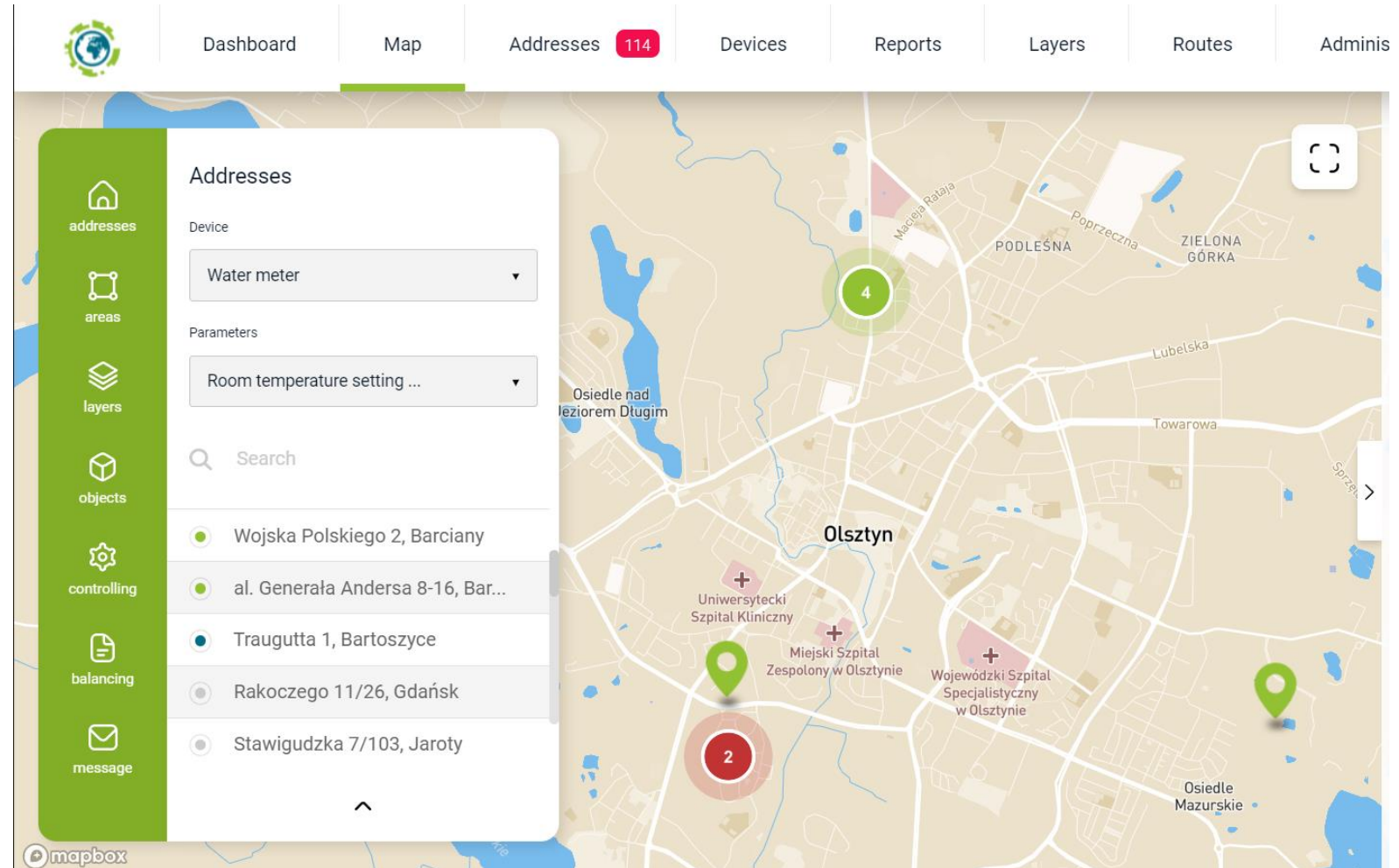


General process



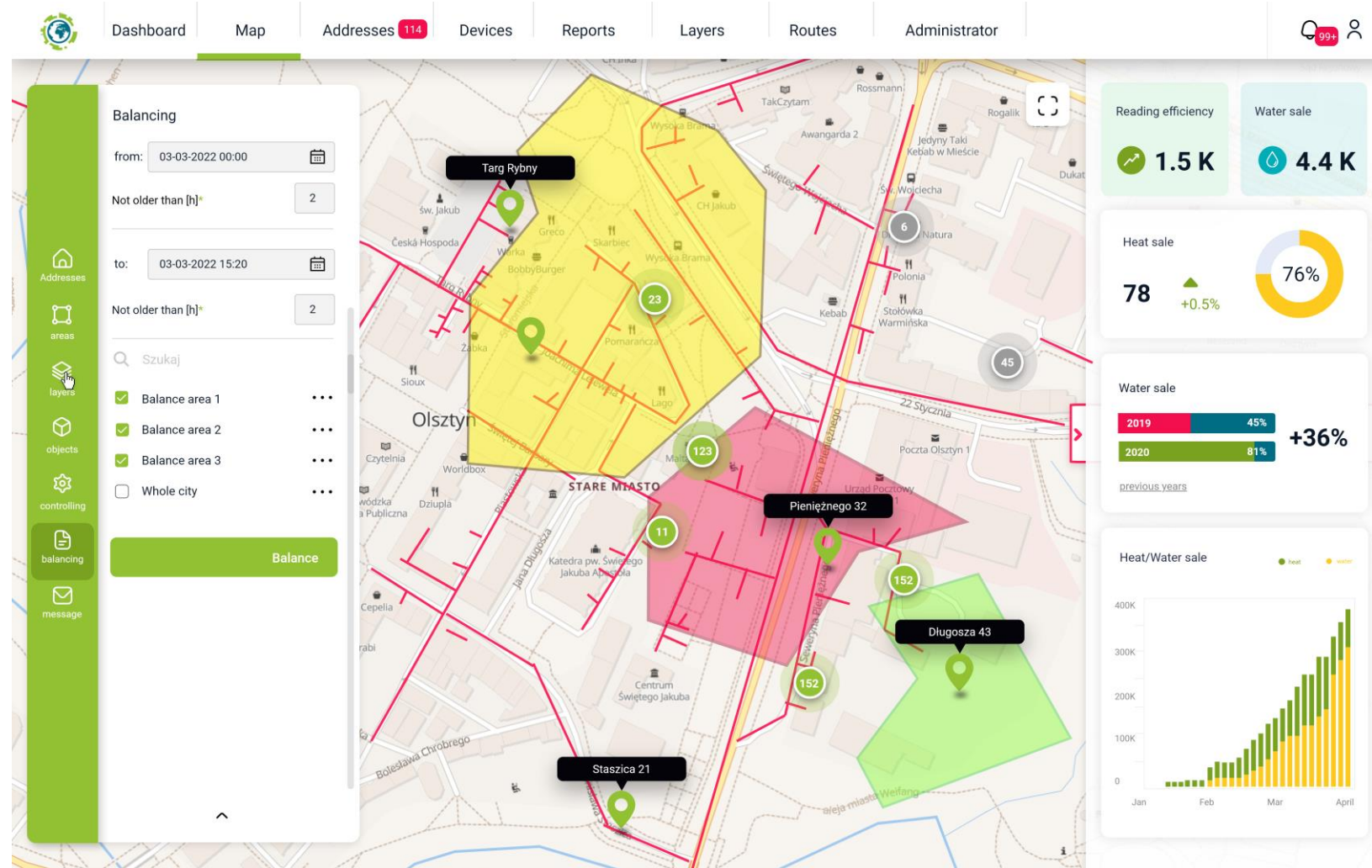
GlobeOMS

- Addresses - easy overview of object status
- Automatic grouping



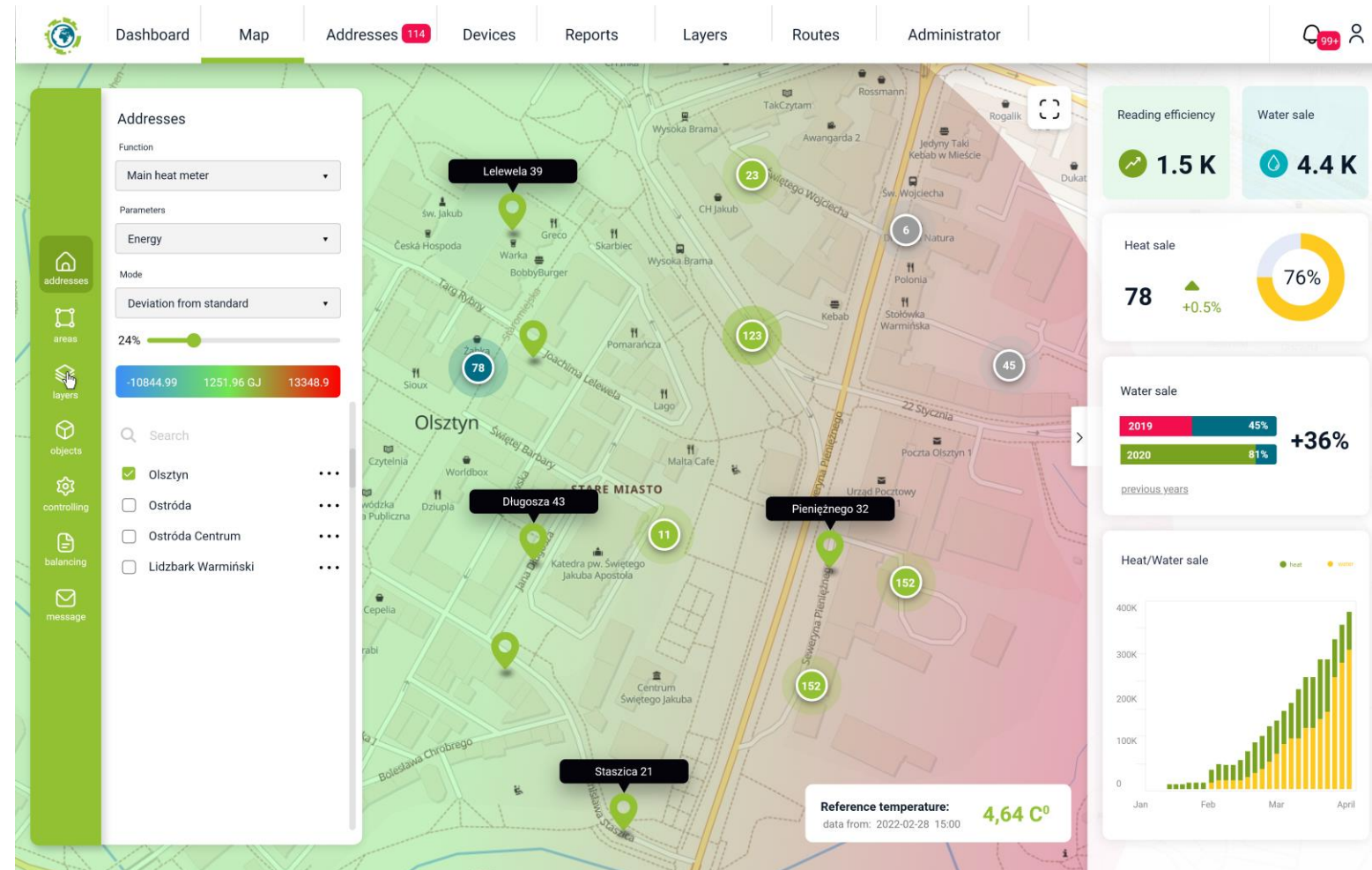
Geodetic layers – presentation on map

- Custom objects
- Networks, buildings, plots
- Object data



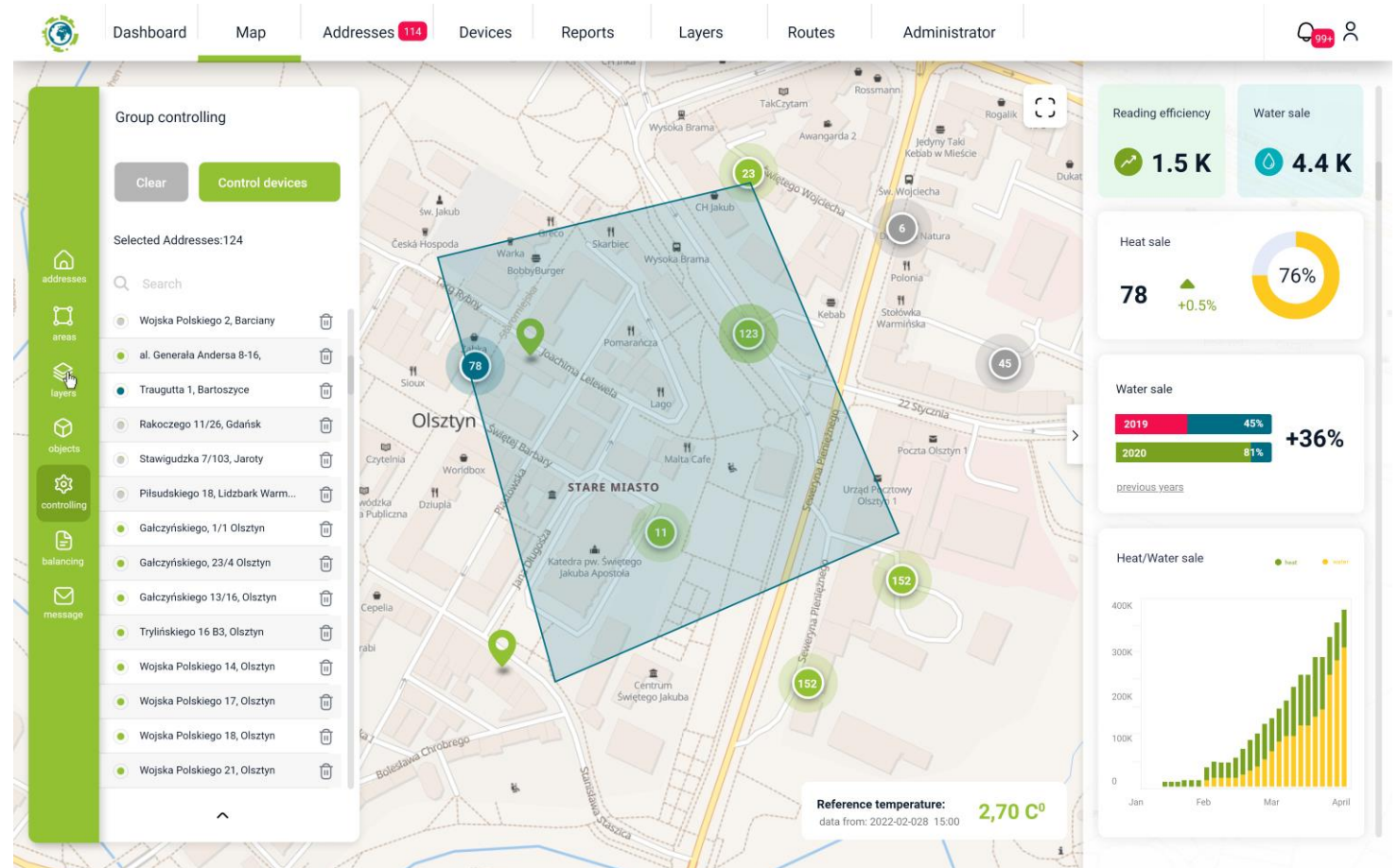
Areas – parameters heat map

- Visualisation of the distribution of any parameter
- Visualisation of deviations from norm



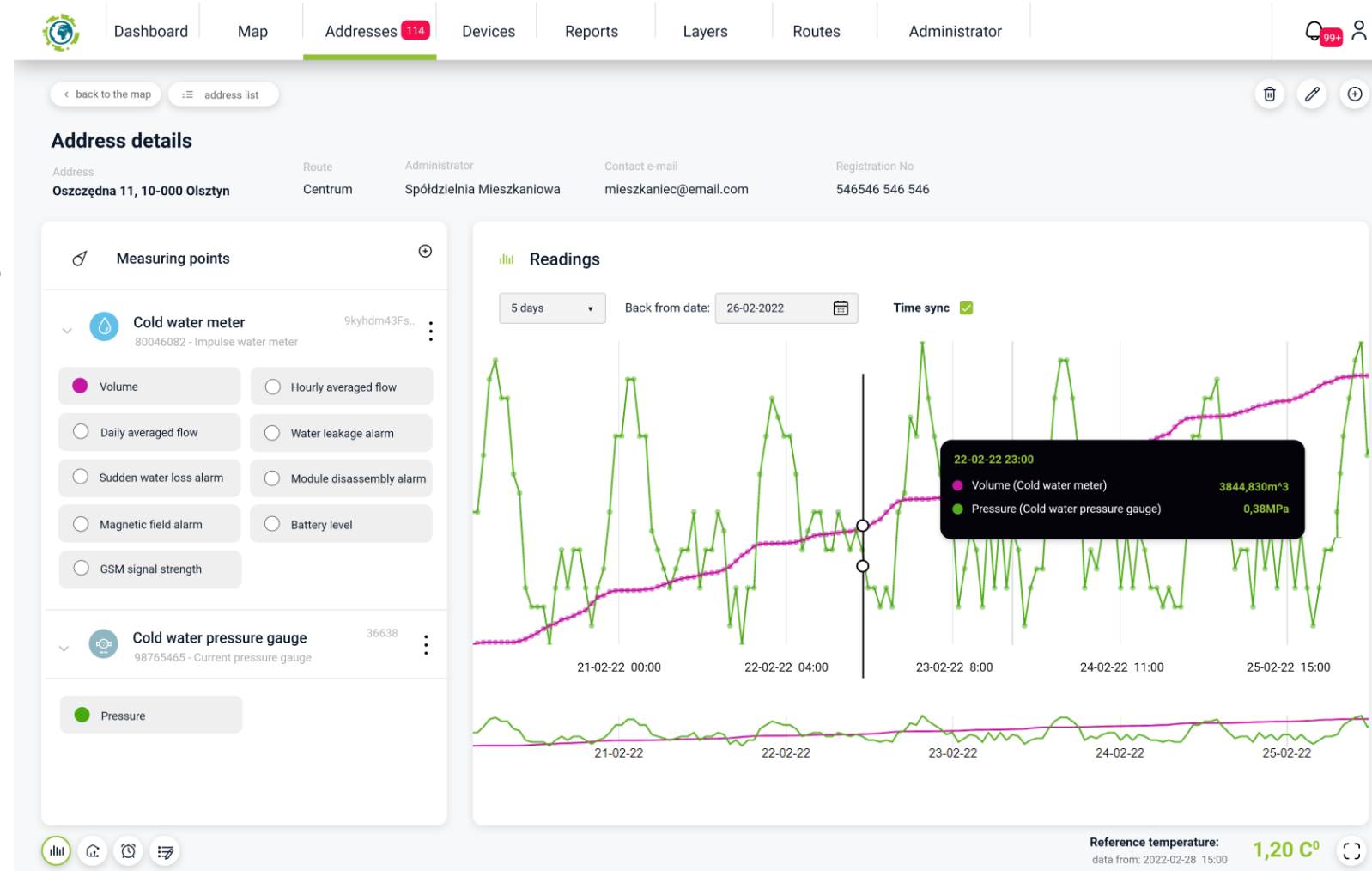
Group control

- Choice of devices from the map
- Common parameters of different manufacturers



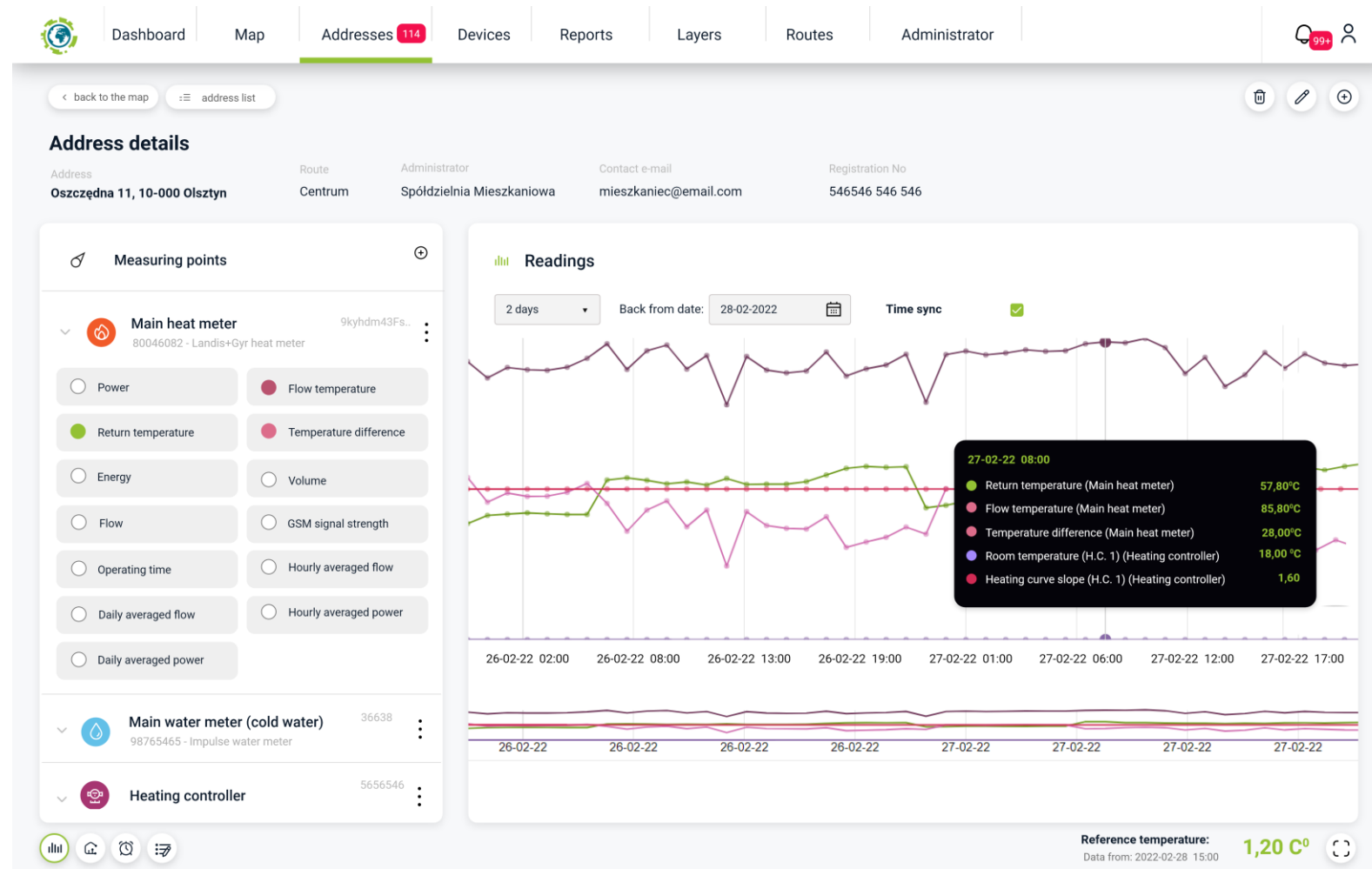
Supported device models

- Heat meters
- Electricity meters
- Heat allocation meters
- Weather regulators
- Smart-home devices
- Pumping stations and industrial facilities
- And others

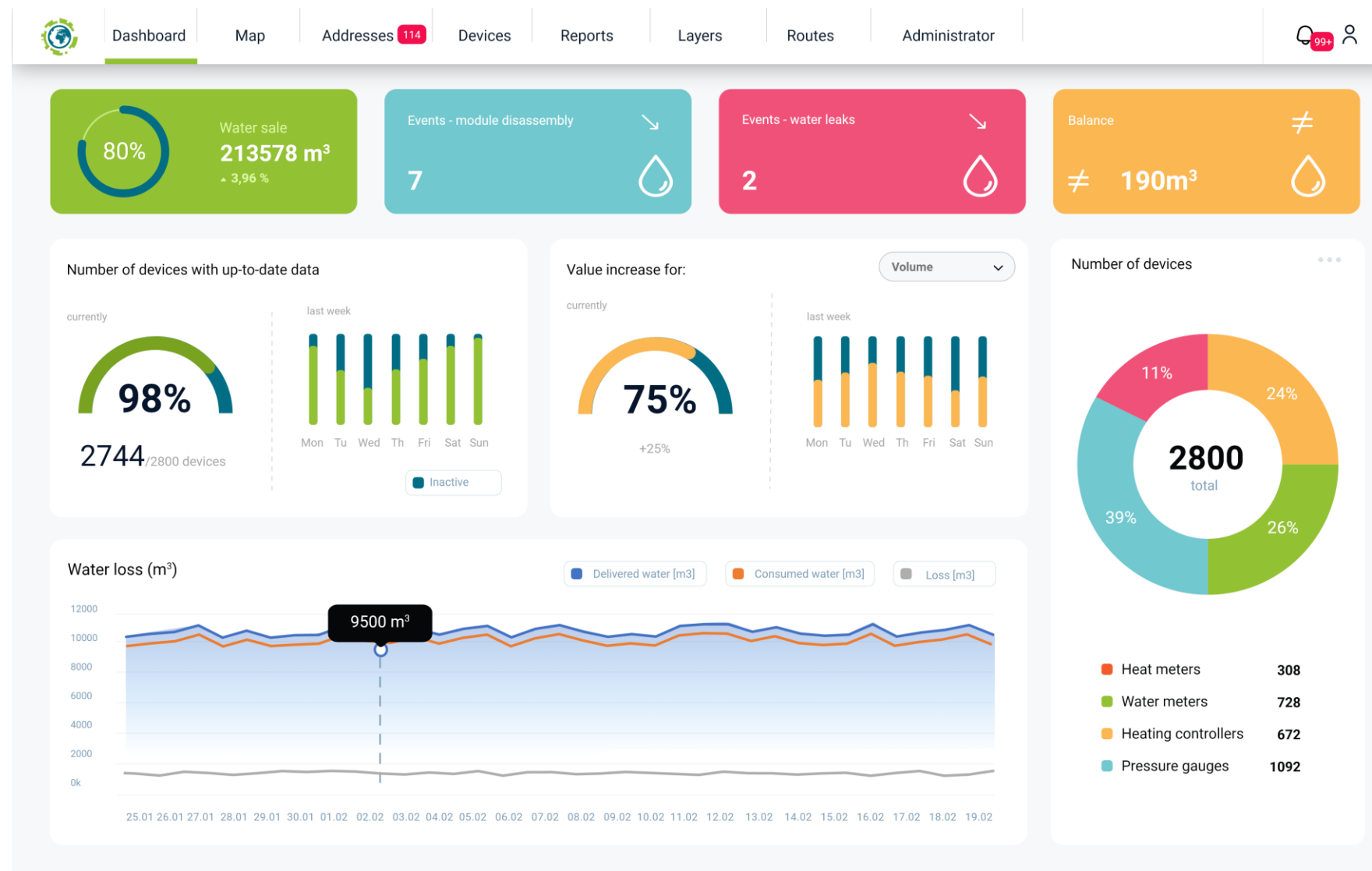


Readings synchronization

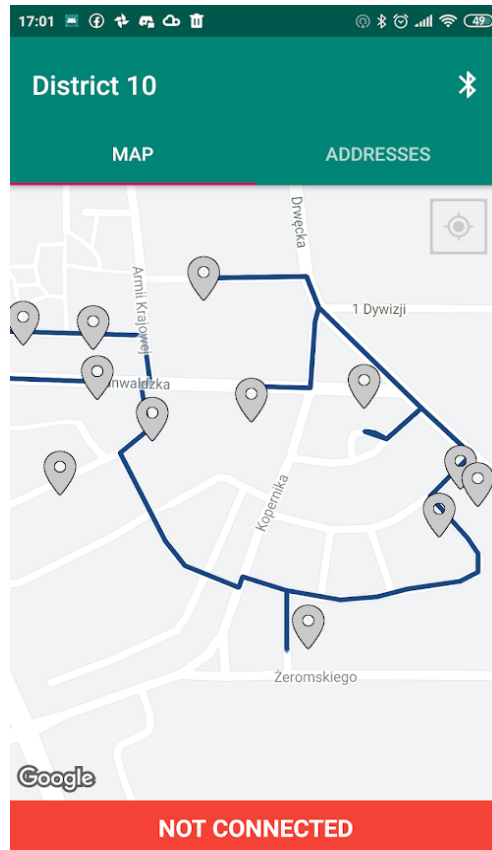
- Data presentation at a common time
- Formulas - virtual parameters with your own logic



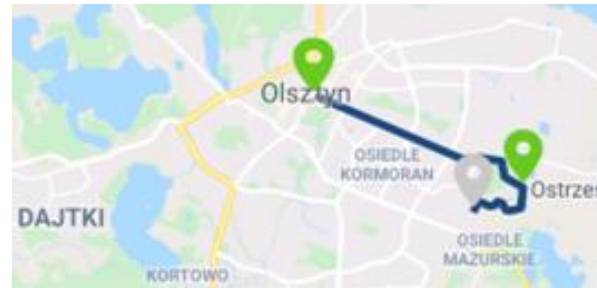
Data presentation








GlobeOMS Routify



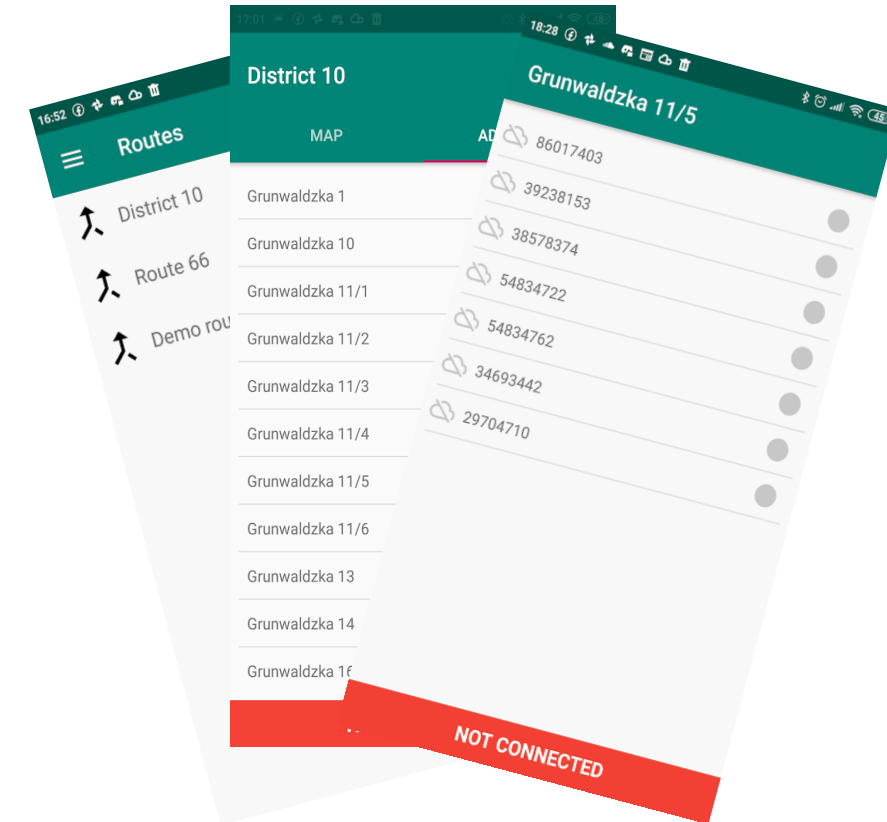
Route optimisation



Visualisation on
the map

Piłsudskiego 10	
Trylińskiego 16/10	 
Trylińskiego 16/11	
Trylińskiego 18/17	

Readings, alerts



Routes, addresses, devices

GlobeOMS Mobile

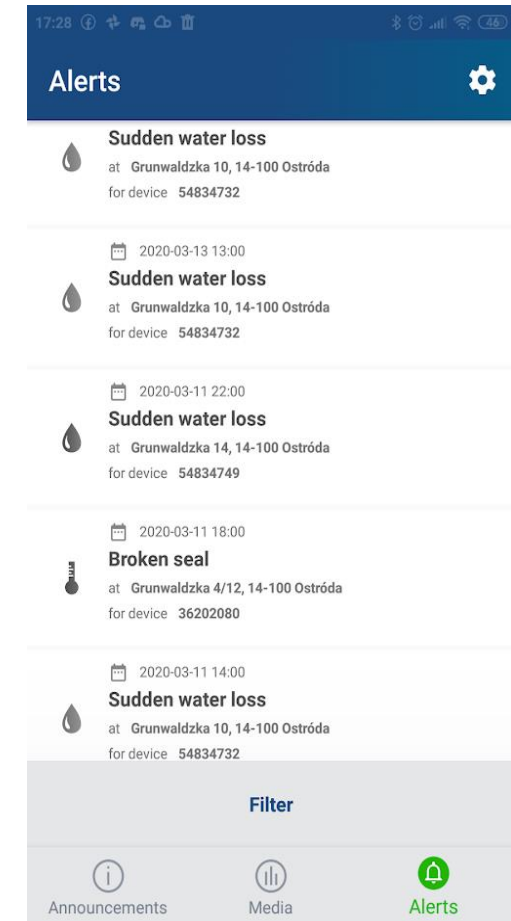
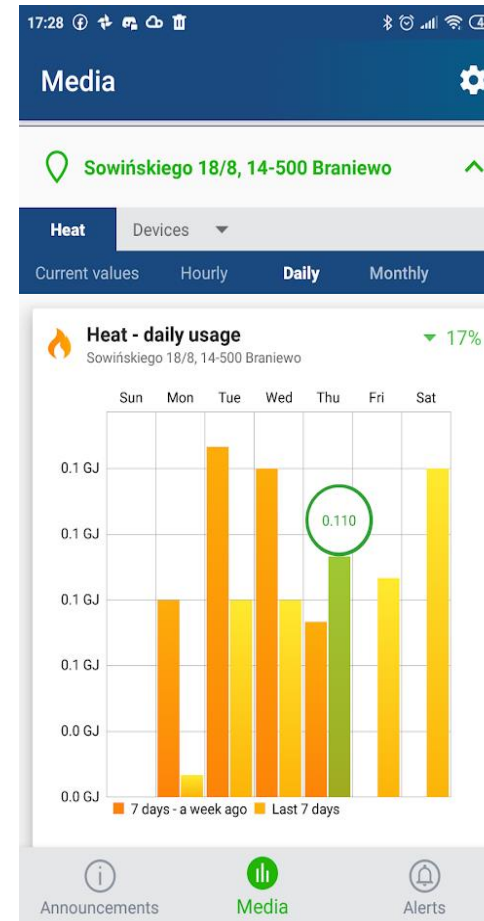
- Mobile applications for end users



Android

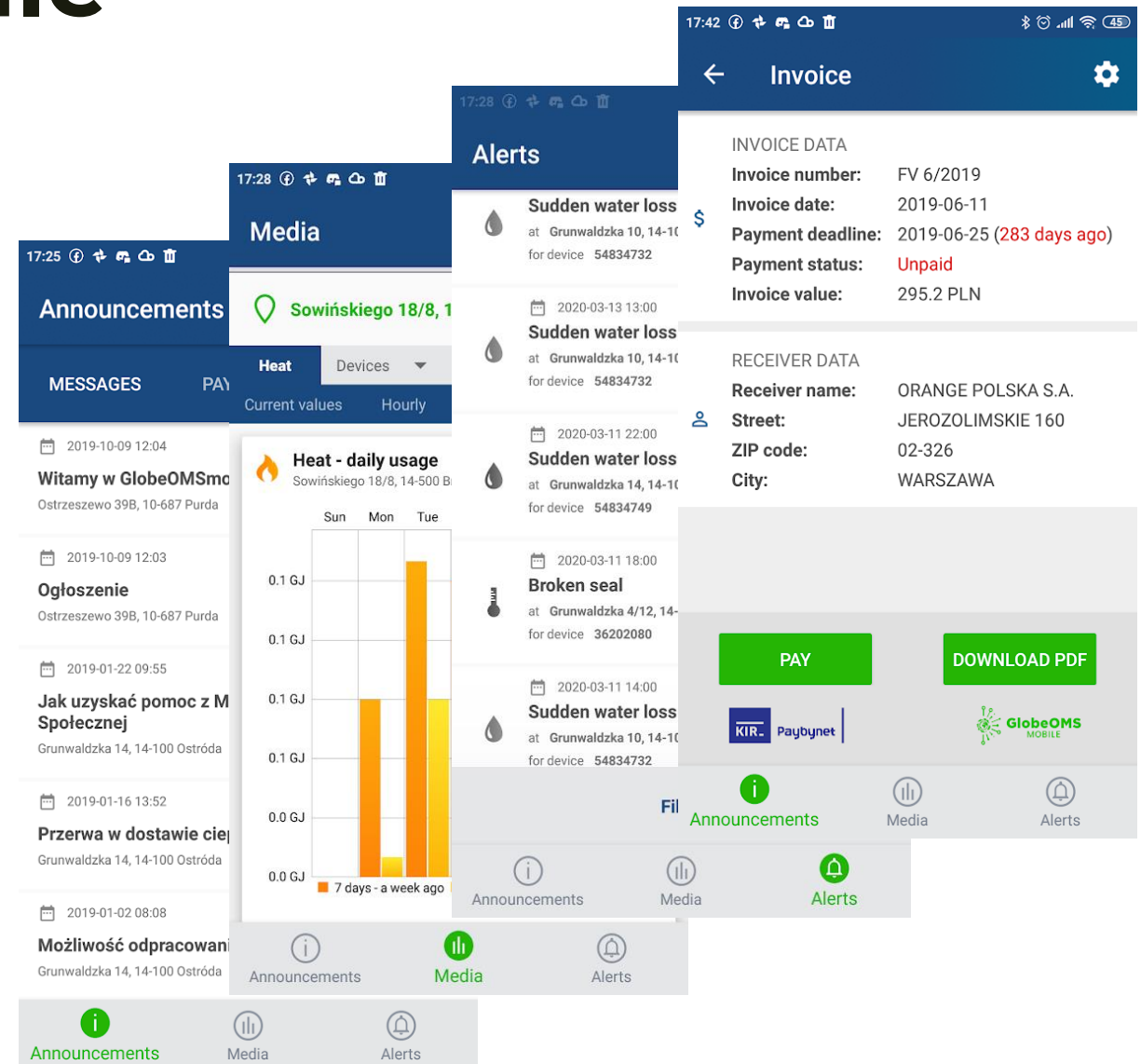


iOS



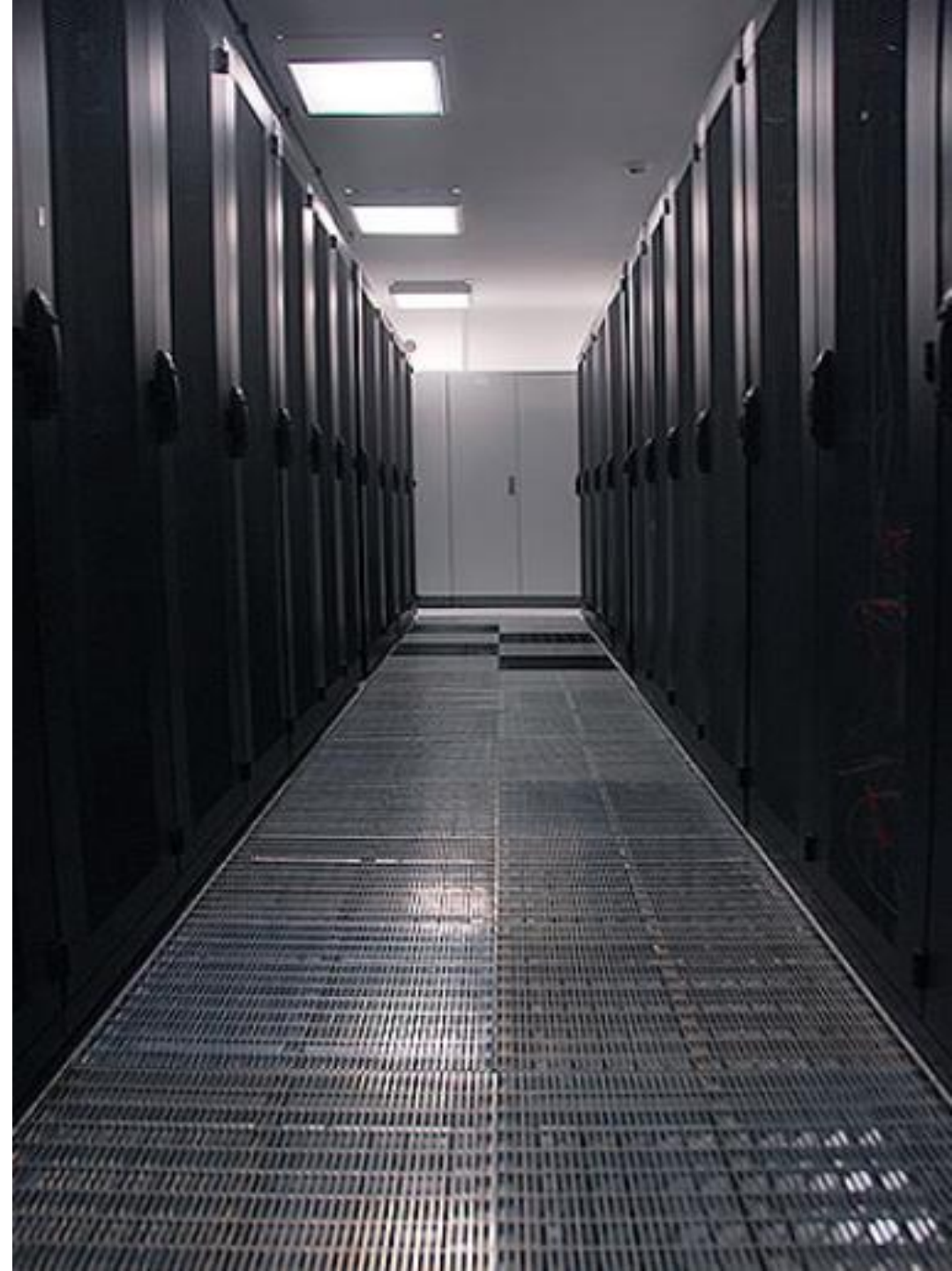
GlobeOMS Mobile

- Announcements
- Media consumption
- Alerts
- Invoices, online payments



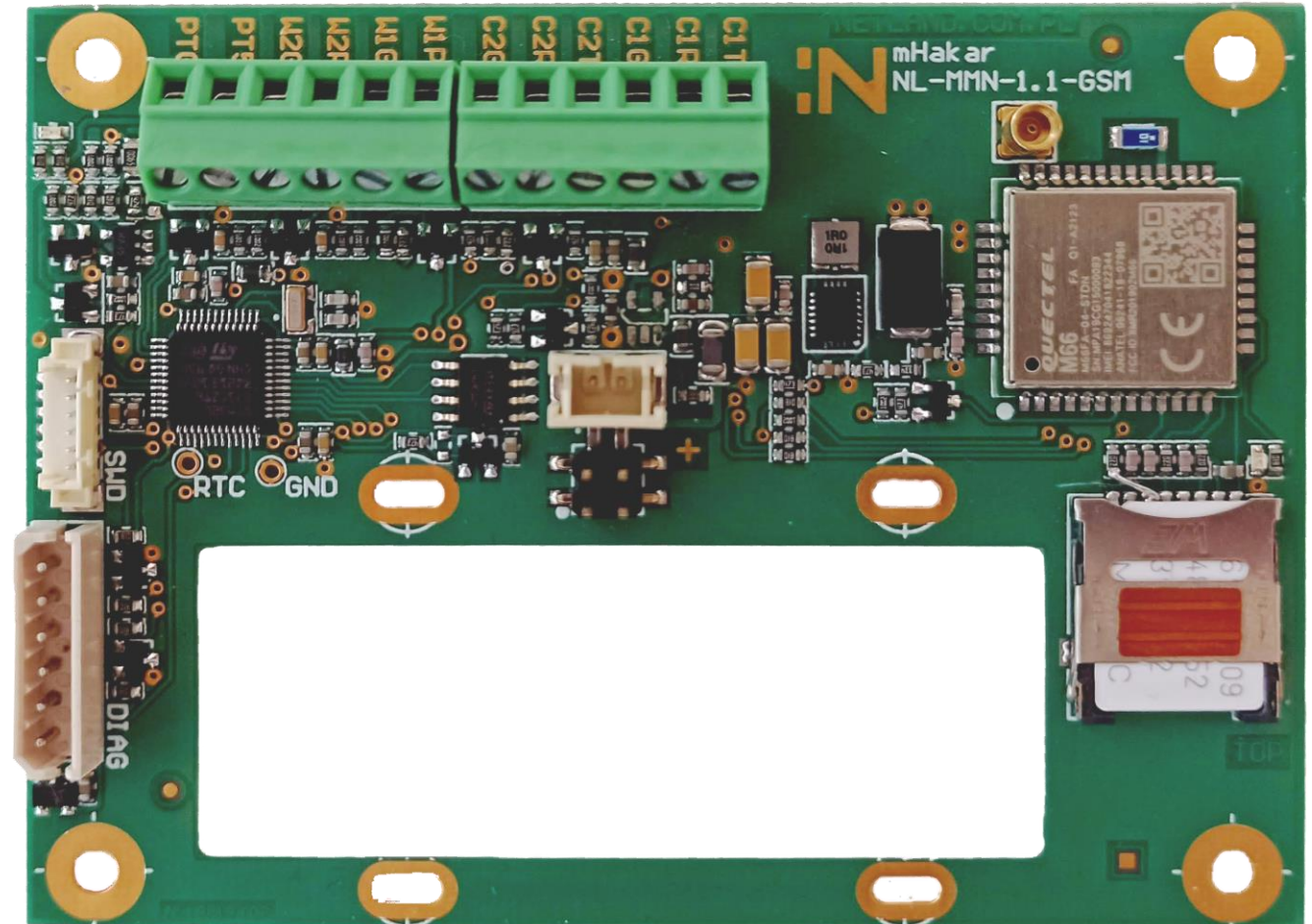
Security

- Professional Data Center
- PN-EN ISO 27001
- PN-EN ISO 27018
- Secure software development process



Telemetry devices – Hakar MMN

- Battery life: up to **10 years**
- Daily readings via **GSM**
- Data buffer
- Remote access
- Compatible with:
 - heat meters,
 - pulse water meters,
 - analogue sensors,
 - RS485



Telemetry devices – Hakar PLS

- Powered by 230V AC Data buffer
- Live readings (optional NBIoT, Cat.M1, Ethernet, wM-Bus, LoRa, Sigfox)
- Always connected (bidirectional communication)
- Data buffer
- Compatible with many devices and protocols

